

## FEATURES

For use with LiftMaster garage door openers: **LM50, LM60, LM80, LM100, LM130EV/EVS/EVF.**

### Personalized Password:

Up to 10,000 possible combinations. Password can be easily changed if desired.

### Temporary Password:

Can be added for visitors or service persons. This temporary password can be limited to a programmable number of hours or a programmable number of entries.

**Rolling Code:** While your password remains constant until you change it, the code between the Keyless Entry and the receiver changes with each use, randomly accessing over 100 billion new codes.

**Operation:** Opener activates when 4-digit password and ENTER button is pressed. If wrong numbers are accidentally pressed, correction can be made immediately. The ENTER button will transmit only the last four digits. The keypad will blink for 15 seconds after the password is transmitted. During that time the ENTER button can be used to stop or reverse the door travel.

**One Button Close:** Opener can be closed by pressing only the ENTER button if the one button close feature has been activated. This feature has been activated at the factory. To activate or deactivate this feature press and hold buttons 1 and 9 for 10 seconds. The keypad will blink twice when the one button close is active. The keypad will blink four times when one button close is deactivated.

## SETTING THE PERSONAL ENTRY PASSWORD

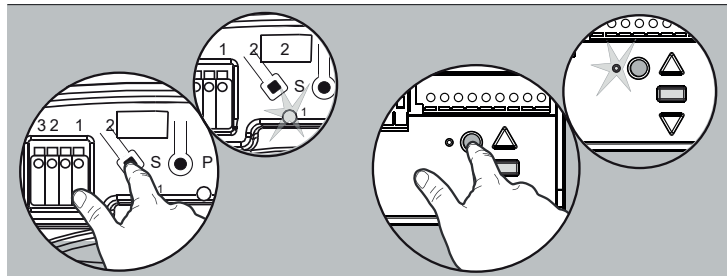
We recommend that you program your password now, before you install the Keyless Entry. Then you can test the reception at the mounting location before you proceed further.



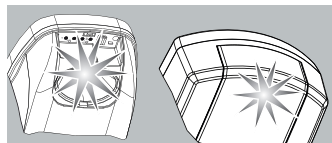
To prevent possible **SERIOUS INJURY** or **DEATH** from a moving gate or garage door:

- Install Keyless Entry Control within sight of the garage door, out of reach of children at a minimum height of 1.5 m, and away from all moving parts of door.
- ALWAYS keep remote controls out of reach of children. NEVER permit children to operate, or play with remote control transmitters.
- Activate gate or door ONLY when it can be seen clearly, is properly adjusted, and there are no obstructions to door travel.
- ALWAYS keep gate or garage door in sight until completely closed. NEVER permit anyone to cross path of moving gate or door.

## USING THE "LEARN" BUTTON

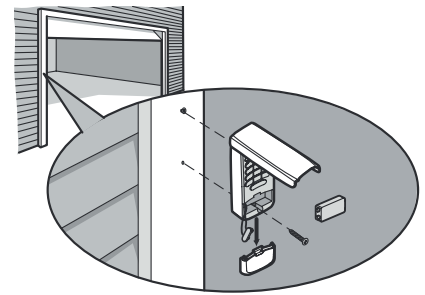


1. Press and release the learn button on motor unit. The learn indicator light will glow steadily for 30 seconds.
2. Within 30 seconds, enter a four digit personal identification number (PIN) of your choice on the keypad. Then press and hold the ENTER button.
3. Release the button when the motor unit lights blink. It has learned the code. If light bulbs are not installed, two clicks will be heard.



## INSTALLATION

Choose a convenient location for installation. Install out of the reach of children at a minimum height of 1.5 m, away from all moving parts of door. For a one-piece door, choose the optional location shown in the illustration to avoid injury as the door swings up and out. Test the reception of the Keyless Entry by operating your opener from the selected location. Change the location if necessary. Remove the battery cover to access the bottom mounting hole.



- Insert a small phillips screw driver into the small hole at the bottom of the cover and gently pull outward to loosen.
- Slide the cover down to remove. Remove battery.

Center the keypad at eye level against the selected location. Mark 4-1/4" (10.8 cm) up the centerline from the bottom and drill a 1/8" (3.2 mm) pilot hole. Install top mounting screw, allowing 1/8" (3.2 mm) to protrude above surface. Position keypad on screw head and adjust for snug fit. With cover open so bottom mounting hole is visible, use a punch to mark hole. Remove keypad and drill 1/8" (3.2 mm) pilot hole. Replace keypad and complete installation with bottom screw, using care to avoid cracking plastic housing. Do not over tighten. To replace battery cover slide up and snap it into place.

## THE KEYLESS ENTRY BATTERY



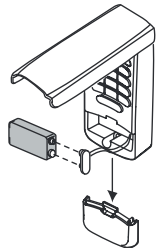
To prevent possible **SERIOUS INJURY** or **DEATH**:

- NEVER allow small children near batteries.
- If battery is swallowed, immediately notify doctor.

The battery should produce power for at least one year. Replace when the Keyless Entry illumination becomes dim or it doesn't stay on after a keystroke. Dispose of old battery properly.



The packaging must be disposed of in the local recyclable containers. According to the European Directive 2002/96/EC on waste electrical equipment, this device must be properly disposed of, after usage in order to ensure a recycling of the materials used. Old accumulators and batteries may not be disposed of in the household waste, since they contain pollutants and must be properly disposed of in municipal collection points or in the containers of the dealer provided. Country-specific regulations must be observed.



## TO CHANGE AN EXISTING, KNOWN PIN

If the existing PIN is known, it may be changed by one person without using a ladder.

1. Press the four buttons for the present PIN, then press and hold the # button. The opener light will blink twice. Release the # button.
2. Press the new 4-digit PIN you have chosen, then press ENTER. The motor unit lights will blink once when the PIN has been learned. Test by pressing the new PIN, then press ENTER. The door should move.

## TO SET A TEMPORARY PIN

You may authorize access by visitors or service people with a temporary 4-digit PIN. After a programmed number of hours or number of accesses, this temporary PIN expires and will no longer open the door. It can be used to close the door even after it has expired. To set a temporary PIN:

1. Press the four buttons for your personal entry PIN (not the last temporary PIN), then press and hold the \* button. The opener light will blink three times. Release the button.
2. Press the temporary 4-digit PIN you have chosen, then press ENTER. The opener light will blink four times.
3. To set the number of hours this temporary PIN will work, press the number of hours (up to 255), then press \*.

OR

3. To set the number of times this temporary PIN will work, press the number of times (up to 255), then press #.

The opener light will blink once when the temporary PIN has been learned. Test by pressing the four buttons for the temporary PIN, then press Enter. The door should move. If the temporary PIN was set to a certain number of openings, remember that the test has used up one opening. To clear the temporary password, repeat steps 1-3, setting the number of hours or times to 0 in step 3.

**SPECIAL NOTE:** The temporary password can ONLY be programmed to keypads working on a LiftMaster Garage Door Opener. It WILL NOT work on keypads programmed to an external receiver. The temporary password will continue to CLOSE the door even after the time has expired. To eliminate this, program a new temporary password into the keypad.

The product is in compliance with the essential requirements and other relevant provisions of Directive 2014/53/EC. The CE Declaration of Conformity can be obtained from [info@chamberlain.eu](mailto:info@chamberlain.eu)