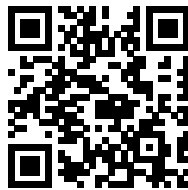


# LiftMaster®

**780EV**

|           |  |
|-----------|--|
| <b>en</b> | <b>Wireless Keypad*</b>                    |
| <b>de</b> | <b>Funk-Codeschloss</b>                    |
| <b>fr</b> | <b>Système d'accès sans clé</b>            |
| <b>nl</b> | <b>Sleutelloos toegangssysteem</b>         |
| <b>it</b> | <b>Sistema di accesso senza chiavi</b>     |
| <b>es</b> | <b>Sistema de acceso sin llave</b>         |
| <b>pt</b> | <b>Sistema de acesso sem chave</b>         |
| <b>sv</b> | <b>Inträde utan nyckel</b>                 |
| <b>fi</b> | <b>Järjestelmällä toimiva kauko-ohjain</b> |
| <b>da</b> | <b>Nøgleløst adgangssystem</b>             |
| <b>no</b> | <b>Nøkkelløst tilgangssystem</b>           |

\*For GB (UK, NI) specific information on national regulations and requirements see English part of the manual.



Chamberlain GmbH  
Saar-Lor-Lux-Str. 19  
66115 Saarbrücken  
Germany  
WEEE-Reg.Nr. DE66256568  
[www.liftmaster.eu](http://www.liftmaster.eu)  
[info@liftmaster.eu](mailto:info@liftmaster.eu)





## WARNING

en

### To prevent possible SERIOUS INJURY or DEATH from a moving gate or garage door:

- The installer must carefully read and understand these instructions before starting any work.
- Install Keyless Entry Control within sight of the garage door, out of the reach of children at a minimum height of 1.5 m, but not higher than 2 m, away from all moving parts of door.
- ALWAYS keep Keyless Entry Control out of reach of children. NEVER permit children to operate, or play with Keyless Entry Control.
- Activate gate or door ONLY when it can be seen clearly, is properly adjusted, and there are no obstructions to door travel.
- ALWAYS keep gate or garage door in sight until completely closed. NEVER permit anyone to cross path of moving gate or door.
- Keep batteries out of sight and out of the reach of children, batteries can be dangerous for children.
- If batteries might have been swallowed or placed inside any part of the body, seek immediate medical attention.

The keypad can be installed on door operators which comply with the essential standards EN12453, EN 60335-2-95 and EN 60335-2-103 (for UK /BS EN12453, BS EN 60335-2-95 and BS EN 60335-2-103).

## FEATURES

For use with LiftMaster garage door openers using 433 MHz, EVO Code (Security+2.0).

### Personalized Password:

Up to 10,000 possible combinations. Password can be easily changed if desired.

### Temporary Password:

Can be added for visitors or service persons. This temporary password can be limited to a programmable number of hours or a programmable number of entries.

**Rolling Code:** While your password remains constant until you change it, the code between the Keyless Entry and the receiver changes with each use, randomly accessing over 100 billion new codes.

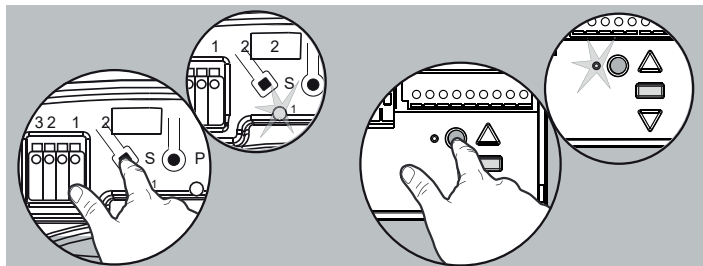
**Operation:** Opener activates when 4-digit password and ENTER button is pressed. If wrong numbers are accidentally pressed, correction can be made immediately. The ENTER button will transmit only the last four digits. The keypad will blink for 15 seconds after the password is transmitted. During that time the ENTER button can be used to stop or reverse the door travel.

**One Button Close:** Opener can be closed by pressing only the ENTER button if the one button close feature has been activated. This feature has been activated at the factory. To activate or deactivate this feature press and hold buttons 1 and 9 for 10 seconds. The keypad will blink twice when the one button close is active. The keypad will blink four times when one button close is deactivated.

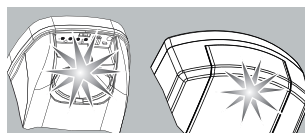
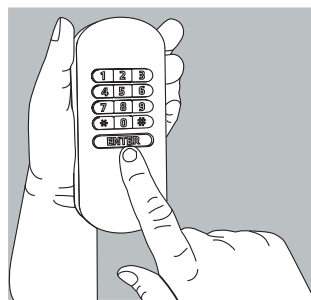
## SETTING THE PERSONAL ENTRY PASSWORD

We recommend that you program your password now, before you install the Keyless Entry. Then you can test the reception at the mounting location before you proceed further.

## USING THE "LEARN" BUTTON

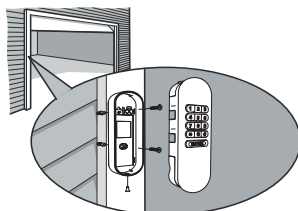


1. Press and release the learn button on motor unit. The learn indicator light will glow steadily for 30 seconds.
2. Within 30 seconds, enter a four digit personal identification number (PIN) of your choice on the keypad. Then press and hold the ENTER button.
3. Release the button when the motor unit lights blink. It has learned the code. If light bulbs are not installed, two clicks will be heard.



## INSTALLATION

Choose a convenient location for installation. Install out of the reach of children at a minimum height of 1.5 m, but not higher than 2 m, away from all moving parts of door. For a one-piece door, choose the optional location shown in the illustration to avoid injury as the door swings up and out. Test the reception of the Keyless Entry by operating your opener from the selected location. Change the location if necessary.



## TO CHANGE AN EXISTING, KNOWN PIN

1. Press the four buttons for the present PIN, then press and hold the # button. The opener light will blink twice. Release the # button.
2. Press the new 4-digit PIN you have chosen, then press ENTER. The motor unit lights will blink once when the PIN has been learned. Test by pressing the new PIN, then press ENTER. The door should move.

## TO SET A TEMPORARY PIN

You may authorize access by visitors or service people with a temporary 4-digit PIN. After a programmed number of hours or number of accesses, this temporary PIN expires and will no longer open the door. It can be used to close the door even after it has expired. To set a temporary PIN:

1. Press the four buttons for your personal entry PIN (not the last temporary PIN), then press and hold the \* button. The opener light will blink three times. Release the button.
2. Press the temporary 4-digit PIN you have chosen, then press ENTER. The opener light will blink four times.
3. To set the number of hours this temporary PIN will work, press the number of hours (up to 255), then press \*.  
**OR**
3. To set the number of times this temporary PIN will work, press the number of times (up to 255), then press #.

The opener light will blink once when the temporary PIN has been learned. Test by pressing the four buttons for the temporary PIN, then press Enter. The door should move. If the temporary PIN was set to a certain number of openings, remember that the test has used up one opening. To clear the temporary password, repeat steps 1-3, setting the number of hours or times to 0 in step 3.

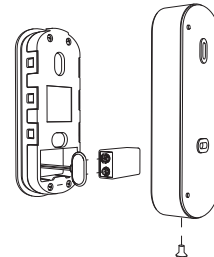
**SPECIAL NOTE:** The temporary password can ONLY be programmed to keypads working on a LiftMaster Garage Door Opener. It WILL NOT work on keypads programmed to an external receiver. The temporary password will continue to CLOSE the door even after the time has expired. To eliminate this, program a new temporary password into the keypad.

## BATTERY

Replace when the Keyless Entry illumination becomes dim or it doesn't stay on after a keystroke. Dispose of old battery properly. Risk of explosion if the battery is replaced by an incorrect type. Do not ingest battery, Chemical Burn Hazard. This product contains a battery. If swallowed, batteries can cause injuries, or death.

### WARNING

- Keep batteries out of sight and out of the reach of children, batteries can be dangerous for children.
- Dispose of used batteries immediately. Do not use defect/swallowed batteries.
- Check periodically if the battery compartments is secure, stop using if defect.
- If batteries might have been swallowed or placed inside any part of the body, seek immediate medical attention.



## TECHNICAL DATA

|                    |   |
|--------------------|---|
| IP class           | : IP55                                      |
| Battery            | : 9V Alkaline                               |
| Transmitting power | : < 10mW                                    |
| Frequency          | : 3 Band<br>433.30MHz, 433.92MHz, 434.54MHz |
| Dimension          | : 162 x 68 x 31.5 mm                        |
| Weight             | : 233 g                                     |

## DISPOSAL



Our electrical and electronic equipment may not be disposed of with household waste and must be disposed of after use properly in accordance with WEEE Directive EU: 2012/19/ EU; GB UK(NI): SI 2012 nr. 19 on waste electrical and electronic equipment in order to ensure that materials are recycled. Collecting waste electrical equipment separately means environmentally-friendly disposal and is completely free of charge for the consumer.

WEEE reg. no. in Germany: DE66256568.

Any waste packaging left over with the end consumer must be collected separately from mixed waste, in accordance with the Directive. Packaging may not be disposed of with household waste, organic waste or in nature. Packaging material must be separated according to its material and disposed of in the recycling containers provided and in certain council recycling bins.



Our batteries are marketed in compliance with the law. The 'crossed-out waste bin' indicates that batteries may not be disposed of with household waste. Batteries included in the product (technical data). In order to avoid causing harm to the environment or people's health, used batteries must be returned for regulated disposal at council recycling centres or via retail outlets, as is prescribed by law. Batteries may only be brought for disposal once fully discharged and, in the case of lithium batteries, with their terminals taped over. The batteries can be easily removed from our equipment for disposal.

Registration number in Germany: 21002670.

Hereby, Chamberlain GmbH declares that the radio equipment type 780EV is in compliance with Directive 2014/53/EU. The full text of the EU declaration of conformity is available at the following internet address: <https://doc.chamberlain.de/>